

KVEL Vernal Regional Airport

Vernal, Utah, USA



GOING TO VERNAL?



[Reserve a Hotel Room](#)

FAA INFORMATION EFFECTIVE 26 DECEMBER 2024

Location

FAA Identifier: VEL
 Lat/Long: 40-26-09.8800N 109-30-41.1210W
 40-26.164667N 109-30.685350W
 40.4360778,-109.5114225 (estimated)
 Elevation: 5274.2 ft. / 1607.6 m (surveyed)
 Variation: 10E (2020)
 From city: 1 mile SE of VERNAL, UT
 Time zone: UTC -7 (UTC -6 during Daylight Saving Time)
 Zip code: 84078

Airport Operations

Airport use: Open to the public
 Activation date: 05/1945
 Control tower: no
 ARTCC: SALT LAKE CITY CENTER
 FSS: CEDAR CITY FLIGHT SERVICE STATION
 NOTAMs facility: VEL (NOTAM-D service available)
 Attendance: DAWN-DUSK
 AFT HR OPS CTC 435-789-8494 OR 435-261-9000.
 Wind indicator: lighted
 Segmented circle: yes
 Lights: ACTVT REIL RWY 17 & 35; MIRL RWY 17/35 - CTAF. PAPI RWY 17 & 35 ON CONSLY.
 Beacon: white-green (lighted land airport)
 Operates sunset to sunrise.
 Fire and rescue: ARFF index A
 Airline operations: 24 HR PPR FOR ACR OPS OVR 30 PAX SEATS - AMGR.

Airport Communications

CTAF/UNICOM: 122.7
 WX ASOS: 118.125 (435-781-1224)

- APCH/DEP CTL SVC PRVDD BY SALT LAKE ARTCC (ZLC) ON 119.95/377.15 MYTON RCAG).

Nearby radio navigation aids

VOR radial/distance	VOR name	Freq	Var
VEL r331/3.5	VERNAL VOR/DME	114.15	15E
MTU r045/33.0	MYTON VOR/DME	112.70	14E

Airport Services

Fuel available: 100LL JET-A
 Parking: hangars and tie-downs
 Airframe service: MAJOR
 Powerplant service: MAJOR
 Bulk oxygen: HIGH/LOW

Runway Information

Runway 17/35

Dimensions: 7000 x 100 ft. / 2134 x 30 m
 Surface: asphalt/grooved, in excellent condition
 Weight bearing capacity: PCN 18 /F/C/X/T
 Single wheel: 45.0
 Double wheel: 55.0
 Runway edge lights: medium intensity
RUNWAY 17
 Latitude: 40-26.740883N
 Longitude: 109-30.698103W
 Elevation: 5267.8 ft.
 Traffic pattern: left
 Runway heading: 169 magnetic, 179 true
 Declared distances: TORA:7000
 Markings: nonprecision, in good condition
 Visual slope indicator: 4-light PAPI on left (3.00 degrees glide path)
 Runway end identifier lights: yes
 Touchdown point: yes, no lights
 Obstructions: 33 ft. pole, 586 ft. from runway, 367 ft. left of centerline, 11:1 slope to clear

RUNWAY 35
 40-25.588463N
 109-30.672615W
 5274.2 ft.
 left
 349 magnetic, 359 true
 TORA:7000
 nonprecision, in good condition
 4-light PAPI on left (3.00 degrees glide path)
 yes
 yes, no lights
 44 ft. trees, 1094 ft. from runway, 203 ft. right of centerline, 20:1 slope to clear

Airport Ownership and Management from official FAA records

Ownership: Publicly-owned
 Owner: UINTAH CO AND VERNAL CITY
 152 E 100 N.
 VERNAL, UT 84078
 Phone (435) 781-0770
 Manager: KEN CAMPBELL
 730 EAST 800 S.
 VERNAL, UT 84078
 Phone (435) 789-3400

Additional Remarks

- RWY 07/25 DECOMMISSIONED.
- FOR CD IF UNA TO CTC ON FSS FREQ. CTC SALT LAKE ARTCC AT 801-320-2568.
- COLD TEMPERATURE AIRPORT. ALTITUDE CORRECTION REQUIRED AT OR BELOW -26C.

Instrument Procedures

NOTE: All procedures below are presented as PDF files. If you need a reader for these files, you should [download](#) the free Adobe Reader.

NOT FOR NAVIGATION. Please procure official charts for flight.
 FAA instrument procedures published for use from 26 December 2024 at 0901Z to 23 January 2025 at 0900z.

IAPs - Instrument Approach Procedures

RNAV (GPS) Y RWY 35	download (230KB)
RNAV (GPS) Z RWY 35	download (214KB)
VOR RWY 35	download (210KB)
NOTE: Special Alternate Minimums apply	download (128KB)
NOTE: Special Take-Off Minimums/Departure Procedures apply	download (227KB)

Other nearby airports with instrument procedures:

- [74V](#) - Roosevelt Municipal Airport (26 nm W)
- [4V0](#) - Rangely Airport (40 nm SE)
- [U69](#) - Duchesne Municipal Airport (42 nm W)
- [KFBR](#) - Fort Bridger Airport (70 nm NW)
- [KRKS](#) - Southwest Wyoming Regional Airport (72 nm N)

FBO, Fuel Providers, and Aircraft Ground Support

Business Name	Contact	Services / Description	Fuel Prices	Comments
Dinaland Aviation	UNICOM 122.70 435-261-9000 [web site] [email]	Aviation fuel, Oxygen service, Aircraft parking (ramp or tiedown), Hangars, Passenger terminal and lounge, Flight training, Aircraft rental, Aircraft charters, ... More info and photos of Dinaland Aviation	 100LL Jet A FS \$5.90 \$5.17 Updated 17-Dec-2024	★★★★★ 6 read write
Classic Aviation	435-789-8494 385-479-2648 [email]	Aviation fuel, Aircraft ground handling, Aircraft parking (ramp or tiedown), Hangars, Hangar leasing / sales, GPU / Power cart, ... More info about Classic Aviation	 100LL Jet A FS \$5.90 \$5.17 GUARANTEED FS=\$5.80 \$5.12 FS=Full service UPDATE PRICES	not yet rated write

Would you like to see your business listed on this page?

If your business provides an interesting product or service to pilots, flight crews, aircraft, or users of the Vernal Regional Airport, you should consider listing it here. To start the listing process, click on the button below

[ADD YOUR BUSINESS OR SERVICE](#)

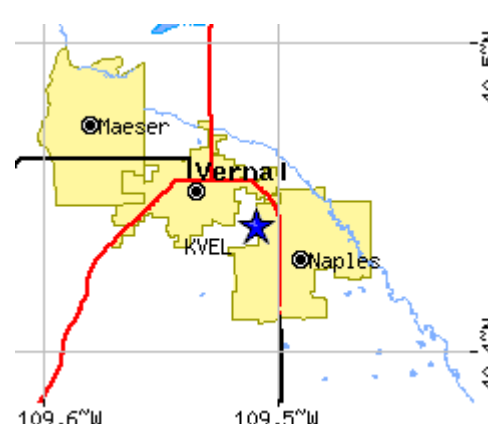
Other Pages about Vernal Regional Airport

[vernalcity.org/...](#)

[UPDATE, REMOVE OR ADD A LINK](#)

[Loc](#) | [Ons](#) | [Rwys](#) | [IFR](#) | [FBO](#) | [Links](#)
[Com](#) | [Nav](#) | [Svcs](#) | [Stats](#) | [Notes](#)

First Coast Flight Center
 Northeast Florida's Lowest Fuel Prices are at KHEG
 \$4.94 AvGas \$4.29 JetA
[firstcoastflightcenter.com](#)



Road maps at: [MapQuest](#) [Bing](#) [Google](#)

Aerial photo

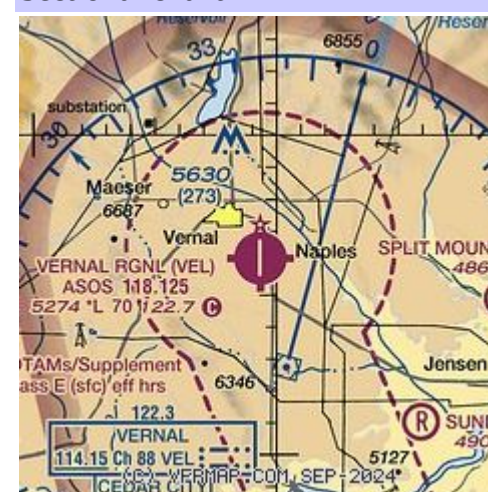
WARNING: Photo may not be current or correct



Photo taken 21-Dec-2017 looking north.

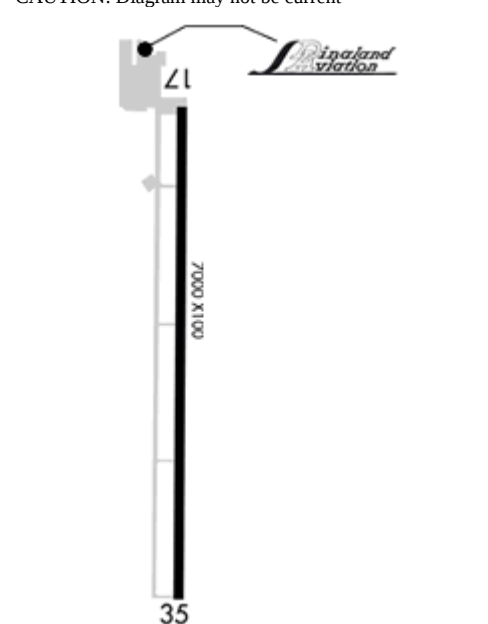
Do you have a better or more recent aerial photo of Vernal Regional Airport that you would like to share? If so, please [send us your photo](#).

Sectional chart



Airport diagram

CAUTION: Diagram may not be current



Airport distance calculator

Flying to Vernal Regional Airport? Find the distance to fly.

From to KVEL
[CALCULATE DISTANCE](#)

Sunrise and sunset

	Times for 27-Dec-2024	
	Local (UTC-7)	Zulu (UTC)
Morning civil twilight	07:11	14:11
Sunrise	07:42	14:42
Sunset	16:58	23:58
Evening civil twilight	17:29	00:29

Current date and time

Zulu (UTC)	27-Dec-2024 20:19:34
Local (UTC-7)	27-Dec-2024 13:19:34

METAR

KVEL 272001Z AUTO 00000KT 1 3/4SM -SN BR BKN028 OVC046 00/M02 A2975 RMK AO2 P0000 T00001017

TAF

KVEL 271740Z 2718/2818 33006KT 4SM -SN BR BKN030 OVC040 FM272100 VRB03KT 25M -SHSN BKN008 OVC015 FM280200 VRB03KT P6SM VCSH OVC030 FM281000 VRB03KT P6SM OVC015

NOTAMs

[Click for the latest NOTAMs](#)

NOTAMs are issued by the DoD/FAA and will open in a separate window not controlled by AirNav.